

WELL BEYOND CARE



8 CAREGIVING BENEFITS

Case for Managers and Discharge Planners



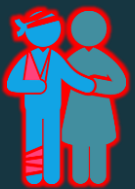
1- Clients Choose Caregiver

No more job postings. We give clients a list of the most compatible caregivers to their care needs, then show them (or their administrator) how to walk through the steps of screening, interviewing and hiring a caregiver.



2- Families Save Money

Typically, families using Well Beyond Care save \$10K to \$30K a year in caregiving costs in comparison to private duty agencies. This opens up the possibility for people needing care who may not be able to afford private duty care.



3- Less Truancy & Turnover

It is about EMPOWERMENT. Caregivers on our system make 25% to 40% more money and because both the client and caregiver get to choose the match, there is less chance of a no-show and little turnover.



4- Payroll & Billing Hands Free

Families have enough to worry about and keeping track of time cards, clocking in and paying caregivers should not be one of those worries. We take care of all the back office items needed for payroll including LTCI reimbursement.



5- Health Care Navigator

Every client has access to a nurse navigator who is experienced with geriatric care to help them find and keep safe, reliable, affordable care in their home, and transition care within their community; and access to local resources.



6- Care Plan / Scheduling

Our system provides the tools to help your clients plan care to safely "age in place." In addition to scheduling, we offer daily reminders (with sign off) of the care plan to your caregiver to ensure proper care is given.



7- Healthcare Team Alerts

The Well Beyond Care system allows a caregiver to alert your client's health care providers via email in case of a significant change in status or health, preventing avoidable emergent events or needless emergency room visits.



8- Family & Friends Oversight

Our unique care-circle system allows extended family members to stay informed on the care that is being performed. With our internal messaging, family and friends can communicate with the caregiver and their nurse navigator.

